

**NEW**

# PEDAYAK ELECTRIC

**Model : BASIC**



PEDAYAK ELECTRIC BASIC is a "hands-free" kayak with hybrid electric and/or muscular drive, manoeuvrable, stable, simple and light.

**It features:**

- A muscular propulsion with pedals and propeller.
- An electric motor controled by only 2 buttons.
- A steering system with a sliding stick located on the side directing an electric pod.

**This combination provides surprising manoeuvrability and agility, forwards or backwards.**

The PEDAYAK ELECTRIC BASIC is easy and fun.



## Features

Unsinkable self-emptyng hull in roto-moulded polyethylene, "sit on top" type.  
Length x width : 360 x 73 cm  
Weigth (fully equipped) : 47 kg (103 Lbs)  
Maximum load: 160 kg (353 Lbs)  
Floatability: 429 dm<sup>3</sup>/liters  
Speed pedalling : 8 km/h (5 M/h)  
Speed no pedalling : 5,5 km/h (3,5 M/h)  
Power : 200 Watt / 12 Volt  
Autonomy (with 50 Ah lithium battery):  
Speed 1 : 5 hours ; Speed 2 : 2 hours  
With solar panels : 10 hours



## KEY ADVANTAGES :

- Allows either 100% electric and/or 100% muscular propulsion, or a combination of both.
- Environment friendly : **No CO2 emissions, silent, 100% recyclable components.**
- Its motor control is integrated into a small box with just 2 buttons:
  - Forward-stop-reverse
  - 2 speeds: slow and fast.
- Can be fitted with solar panels (see **PEDAYAK SOLAR**).
- Steering is provided by an underhand stick which directly orientates the electric pod.
- The battery is located inside the waterproof hull. It is recharged at home.
- Can beach : the propeller and rudder are protected by two keels, go in very shallow areas (35 cm draught).
- Well manoeuvring, agile, turns on the spot.
- Can accommodate an extra passengers, less than 40 kg.
- Stable and unsinkable, good at sea. Quiet. Comfortable with its ergonomic backrest.
- Storage compartments for GPS, bottles and cans, bottle holder, front and rear storage bins.
- Modular: can be equipped with a **SAIL**, can be fitted in **TRIO** (trimaran), **PRAO** or **GRAND PRAO** (one side float), **DUO** (catamaran) versions, with an intermediate removable structure, allowing up to 5 passengers, and a wide range of activities, sunbathing, bringing diving or bivouac equipment, etc.
- More than 10 accessories available for fishing, sailing, raid, tourism.

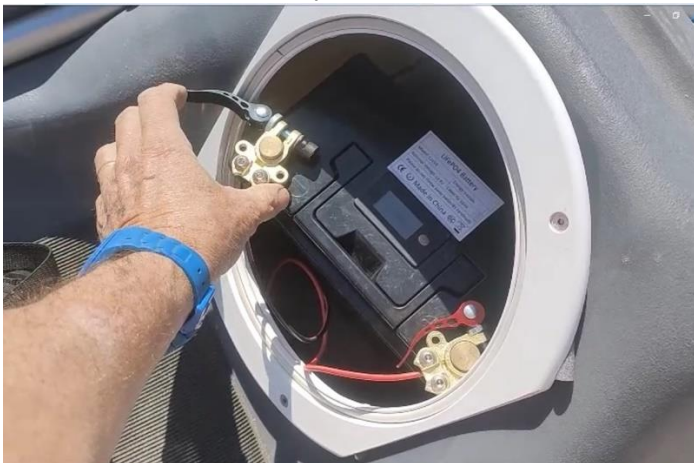
Moteur control



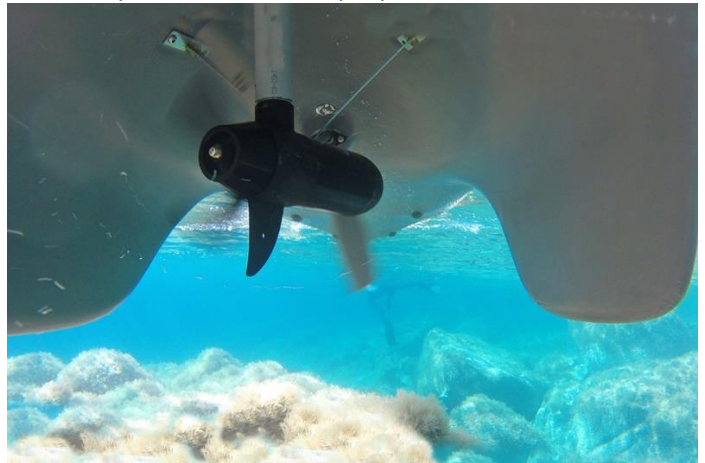
Steering control stick



Battery connection



Electric pod and muscular propeller, between the keels



[See the video](#)

**PEDAYAK**  
ELECTRIC

made by

L'Aquaphile, sarl  
[www.aquaphile.fr](http://www.aquaphile.fr)  
[www.pedayak.com](http://www.pedayak.com)

[contact@aquaphile.fr](mailto:contact@aquaphile.fr)  
Tel : +33 953 857 660

L'AQUAPHILE



WATER LOVER & WATER POWER

Made in France 